



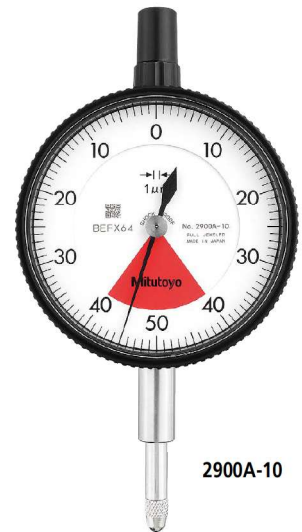
## SERIES 2 — Standard One Revolution Type for Error-free Reading

One revolution type Back Plunger dial gages are also available. (Refer to pages 07-59 to 07-62 for details.)



2990A-10

- The one revolution dial indicator prevents the possibility of reading errors.
- Mitutoyo's unique shock-proof mechanism is incorporated, providing improved resistance to shock due to sudden spindle retraction caused by impact.
- The indicator is highly durable thanks to its oil- and water-tight design, quenched hardened stainless-steel, carbide contact point, and a grand gear made of wear- and deformation-resistant material.
- Application of an anti-reflective and hard surface coating improves scale visibility along with scratch and chemical resistance.
- The dead zone in red indicates "accuracy not guaranteed".



2900A-10

### SPECIFICATIONS

Metric		ISO/JIS type						ANSI/AGD type			
Code No.		Graduation (mm)	Range (range/rev) (mm)	Maximum permissible error (MPE) (μm)						Dial reading	Measuring force (N)
w/lug	Flat-back			Indication error				Hysteresis	Repeat-ability		
				1/10 Rev	1/2 Rev	1 Rev	Measuring range				
2928A	2928AB	0.1	4 (5)	20	—	—	40	20	20	2-0-2	1.4 or less
2929A	2929AB	0.01	0.8 (1)	5	—	—	8	3	3	40-0-40	1.4 or less
2929A-62	2929AB-62	0.01	0.8 (1)	5	—	—	8	3	3	40-0-40	2.0 or less
2959A	2959AB	0.01	1.6 (2)	5	—	—	10	3	3	80-0-80	1.4 or less
2900A-10	2900AB-10	0.001	0.08 (0.1)	2			3	2	0.5	40 0 40	1.5 or less
2900A-72	2900AB-72	0.001	0.08 (0.1)	2	—	—	3	2	0.5	40-0-40	2.0 or less
2901A-10	2901AB-10	0.001	0.16 (0.2)	2	—	—	4	2	0.5	80-0-80	1.5 or less

Inch		Accuracy (in)						Dial reading	Measuring force (N)
Code No.		Graduation (in)	Range (range/rev) (in)	First 1 Rev/2.5 Rev/10 Rev		Retrace			
w/lug	Flat-back								
2909A-62	2909AB-62	0.0005	0.04/0.05	±0.0005/—/—		0.00016	±0.0001	20-0-20	2.5 or less
2910A-10	2910AB-10	0.0001	0.008/0.01	±0.0001/—/—		0.0001	±0.00003	4-0-4	1.8 or less

Note: Completed products inspection is performed in the vertical orientation (contact point downward) and the stated accuracy is guaranteed.

SERIES 2 — Standard One Revolution Type for Error-free Reading

DIMENSIONS

ISO/JIS  
Type

Unit: mm

Code No.	A	B	C	D	E	F	G	H	I	Mass (g)	
										w/luq	Flat-back
2928A	47.2	65.2	57	18.1	20	16.9	19.8	52	7.6	145	136
2929A	47.2	65.2	57	18.1	20	16.9	19.8	52	7.6	145	136
2929A-62	47.2	65.2	57	18.1	20	16.9	19.8	52	7.6	145	136
2959A	47.2	65.2	57	18.1	20	16.9	19.8	52	7.6	145	136
2900A-10	47.2	66	57	18.1	20	16.9	20.6	52	7.6	149	140
2900A-72	47.2	66	57	18.1	20	16.9	20.6	52	7.6	149	140
2901A-10	47.2	66.1	57	18.1	20	16.9	20.7	52	7.6	149	140

Note: Refer to pages 07-63 to 07-68 for details of contact points.

ANSI/AGD  
Type

Unit: in

Code No.	A	B	C	D	E	F	G	H	I	Mass (g)	
										w/luq	Flat-back
2909A-62	1.86	2.04	2.24	0.71	3/4	0.54	0.39	2.05	0.30	163	138
2910A-10	1.86	2.02	2.24	0.71	3/4	0.54	0.36	2.05	0.30	164	139

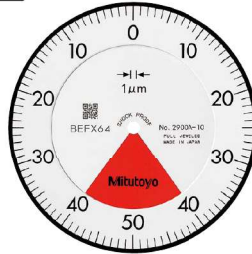
Note: Refer to pages 07-63 to 07-68 for details of contact points.

Optional Accessories

- Limit hand (2 pcs.), Bezel clamp
- Refer to page 07-31 for details.



Balanced scale



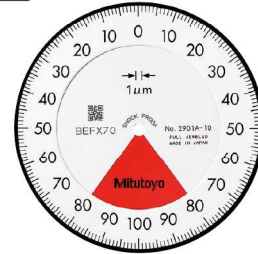
Graduation: 0.001 mm,  
Measuring range: 0.08 mm

**2900A-10**

- One revolution
- Shockproof
- Jeweled bearing
- 2900A-72**
- One revolution
- Shockproof
- Dustproof
- Jeweled bearing



Balanced scale



Graduation: 0.001 mm,  
Measuring range: 0.16 mm

**2901A-10**

- One revolution
- Shockproof
- Jeweled bearing



Balanced scale



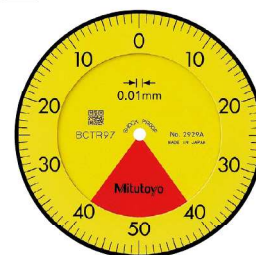
Graduation: 0.1 mm,  
Measuring range: 4 mm

**2928A**

- One revolution
- Shockproof



Balanced scale



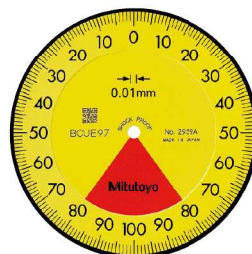
Graduation: 0.01 mm,  
Measuring range: 0.8 mm

**2929A**

- One revolution
- Shockproof
- 2929A-62**
- One revolution
- Shockproof
- Dustproof



Balanced scale



Graduation: 0.01 mm,  
Measuring range: 1.6 mm

**2959A**

- One revolution
- Shockproof

## FEATURES

**Metric** ☐ ISO/JIS type ☐ ANSI/AGD type

Code No.		w/lug	Flat-back	One revolution	Shockproof	60°	Dustproof	Jeweled bearing
2928A	2928AB	✓	✓	✓				
2929A	2929AB	✓	✓	✓				
2929A-62	2929AB-62	✓	✓	✓			✓	
2959A	2959AB	✓	✓	✓				
2900A-10	2900AB-10	✓	✓	✓				✓
2900A-72	2900AB-72	✓	✓	✓			✓	✓
2901A-10	2901AB-10	✓	✓	✓				✓

Code No.		w/lug	Flat-back	One revolution	Shockproof	60°	Dustproof	Jeweled bearing
2909A-62	2909AB-62	✓	✓	✓			✓	
2910A-10	2910AB-10	✓	✓	✓				✓